

Pinnacle Charter School's

Communicator

**Special points
of interest:**

IMPORTANT
NYS ELA Tests
Grades 3-8:
Tuesday—Friday
May 3-6

NYS Math Tests
Grades 3-8:
Wed.—Friday
May 11-13

Familiar Faces

The Board of Trustees has named Dr. Heather A. Lyon the interim Chief Academic Officer at Pinnacle Charter School for the remainder of the 2010-11 school year. The Director of Instruction since 2007, Lyon is known at Pinnacle and in the community for her leadership among students, faculty and staff, and her drive toward excellence for the entire school community.

Dr. Lyon became a certified reading specialist after completing her Master's degree in education at the University at Buffalo, and prior to that her Bachelor of Arts in English from Alfred University. Most recently, Lyon received her Ph.D. in Educational Administration from the University at Buffalo in February 2010. She is a certified School District Administrator and Supervisor, and is also certified to teach Reading and English.

At Pinnacle, Lyon has served as a leader in the day-to-day operation of this urban K-8 charter school. She has led meetings with school faculty, staff and administrators, and has experience in the coordination, administration and scoring of New York State student assessments. She has supervised the development of curriculum for new programs and the revision of curriculum for existing programs, among other accomplishments. Lyon also worked for three years as the Western New York Regional School Support Center Coordinator for Erie 1 BOCES, and as an English teacher for three years at Cleveland Hill High School.

Dr. Lyon currently resides with her husband Howard, and their three children, Nolan, 4, Lilia, 2, and Oliver, 6 months in Wheatfield, NY. She's an avid reader, her favorite author is John Steinbeck, and she enjoys spending her free time with her family.

**Inside this issue:**

Trimester 3 Calendar and Up- coming Events	2-3
Friendly Reminders	4
Around the School	5
Redirection Room	6
Parents' Page	7

For Trimester 3, there are several faces that will be familiar to you, but these people may be in new positions. Here are some of the most notable changes. . .

- **Mrs. Gordon**—was a Reading Specialist, will be the Interim Director of Instruction
- **Miss Curry**—was a Special Education Teacher, will be the Interim Director of Student Services
- **Miss Rogers**—was the a Special Education Teacher, will be the Interim Dean of Students
- **Mr. Buffomante**—was a 4th Grade Teacher, will be the Behavior Specialist of the Redirection Room

(see page 5 for a list of the other staff changes)

THIRD TRIMESTER CALENDAR 2010-11

Pinnacle Charter School

APRIL 2011						
S	M	T	W	TH	F	S
					1	2
3	4	5	6	7	8	9
10	11	12	13	14	15	16
17	18	19	20	21	22	23
24	25	26	27	28	29	30

April 1-26 Trimester Break
 April 1 P/T Conferences
 April 4-15 Intersession Labs
 April 26 Staff Development
NEW April 27 Staff Development



MAY 2011 INITIATIVE						
S	M	T	W	TH	F	S
1	2	3	4	5	6	7
8	9	10	11	12	13	14
15	16	17	18	19	20	21
22	23	24	25	26	27	28
29	30	31				

May 4-6 NYS ELA Assessment (Gr. 3-8)
NEW May 6 Quiz Mania (6-8 pm)
 May 11-13 NYS Math Assessment (Gr. 3-8)
NEW May 16 ELA Scoring- NO SCHOOL
 May 20 5K Race
NEW May 23 Math Scoring- NO SCHOOL
 May 30 Memorial Holiday NO SCHOOL
 May 31-June 2 NYS Science Performance Assess (Gr. 4 and 8)



JUNE 2011 RESOURCEFULNESS						
S	M	T	W	TH	F	S
			1	2	3	4
5	6	7	8	9	10	11
12	13	14	15	16	17	18
19	20	21	22	23	24	25
26	27	28	29	30		

June 2^p, 9^A Kindergarten Screening (1/2 day each)
 June 3 Junior Achievement (JA in a Day)
 June 6 NYS Science Written Assessment (Gr. 4 and 8)
 June 17 Flag Day Ceremony/Half Day- 11:30 Dismissal
NEW June 20 Pinnacle Pride and Arts Show (6-8 pm)

JULY 2011 PERSEVERANCE						
S	M	T	W	TH	F	S
					1	2
3	4	5	6	7	8	9
10	11	12	13	14	15	16
17	18	19	20	21	22	23
24	25	26	27	28	29	30

July 4-5 Indep Day Obs- NO SCHOOL
 July 15 Field Day
 July 18 Field Day (Rain Date)
 July 18 Kindergarten Reaching Up Ceremony (6 pm)
NEW July 20 8th Grade Graduation (7:30 pm)
NEW July 21 Last Day of Classes- 11:30 Dismissal
 July 22 Staff Development Day

Trimester 3 Total: 56 Student Days

**Mark Your
Calendars!**



**PINNACLE PRIDE
NIGHT AND THE ART
SHOW
ARE COMING SOON!
MARK YOUR
CALENDAR FOR
MONDAY, JUNE
20TH FROM 6-8 PM!**

Pinnacle Charter School

**3RD ANNUAL
PINNACLE CHARTER SCHOOL 5K**
Sponsored by Online Thymes
PROCEEDS TO BENEFIT PINNACLE ATHLETICS

DATE: Friday, May 20, 2011

TIME: 5K start, 6:00 PM

LOCATION: Pinnacle Charter School
115 Ash Street, Buffalo, NY 14204

\$20 In Advance
\$25 Day Of
FREE For PCS Students

\$100 Sponsor A Student
Includes new pair of running shoes,
distance training, admission to race

Sponsored By:

MAIL REGISTRATIONS TO: Erin Lingle
115 Ash Street Buffalo NY 14204

MAKE CHECKS PAYABLE TO: Pinnacle Charter School

FIRST NAME _____ LAST NAME _____

NUMBER AND STREET _____

TOWN/CITY STATE/PROV ZIP/POST CODE _____

SEX: AGE (DAY OF RACE): 5K / 1 MILE (circle one) PINNACLE STUDENT GRADE:

I WOULD LIKE TO SPONSOR PINNACLE CHARTER SCHOOL STUDENTS (at \$100 each)

In consideration of your accepting my entry, I hereby, for myself, my heirs, my executors and administrators, waive and release any and all rights & claims for damages which I may have against Pinnacle Charter School, and their sponsors for any injury or damages which may be sustained as a result of my participation in this event or writing out of traveling to or from this event. I certify that I am in good health and able to participate in this event.

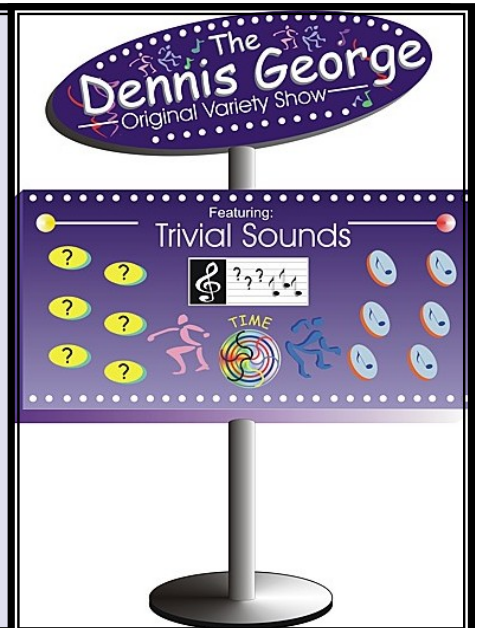
Signature _____ Parent/Guardian Signature (if under 18) _____

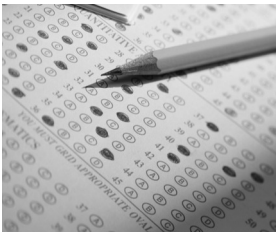
QUIZ MANIA IS COMING!!!

**Mark your calendars for 5-8 pm on Friday,
May 6th for Pinnacle Family's Council's An-
nual Quiz Mania event!**

***Dinner runs from 5-6 ;
Quiz Mania begins at 6!***

**It's ALWAYS a great time and
we look forward to seeing you!**





Important Testing

For the next two weeks, we will be taking the NY State ELA and Math assessments. This is a two- or three- day test that measures what students have learned from Grades 1 - 8. This is the second year that the tests will be in the Spring rather than in the winter. As you know, the results are used for the Pinnacle School Report Card from the State. This test is also important because if a child does not meet the NY

Standards, they are required to get Academic Intervention Services. This is an OUTSTANDING opportunity for our students to show off what strong readers, writers, and mathematicians they have become!

So, all students will need a good breakfast and a good night's sleep. **Please do not schedule any appointments during the testing weeks.** Attitude and attendance are very important and can influence their scores just as much as their skills!

YMCA

Before and after-school care is provided by qualified YMCA staff.

Morning sessions begin as early as 7:00 am. Your child can be picked up by a Pinnacle bus from the William-Emslie YMCA and brought to school at the appropriate time. Please call 845-5440 for application and more information.

**STUDENTS MAY
NOT
ARRIVE
BEFORE 8:10**

Bus Update: Despite our numerous and best efforts, the morning buses repeatedly arrive at school late. This not only affects breakfasts, it also affects instruction. To work around this situation, the start of classes for Trimester 3 will be pushed back by ten minutes (from 8:50 to 9:00). This also means that the end of school will also be pushed back slightly (from 3:50 to 3:56). Please make sure that if your child will not be in school by 9:00 am that you provide breakfast to your child as s/he will not be able to receive a school breakfast after that time.



A Note About Electronic Devices: A second change to be aware of is that if your child brings any electronic devices to school (including, but not limited to: cell phones, cameras, MP3 players, and gaming devices) your child will sign in the device to the teacher at the beginning of the day and sign out the device at the end of the day. According to the Code of Conduct, if your child does not turn in the electronic device, "during school hours these items may be confiscated immediately and the appropriate disciplinary measures taken." You should also know that students bring these things to school at their own risk since Pinnacle is not responsible for loss or theft of electronic devices.



Uniform Reminders

Students must wear the required uniform including a **collared shirt** (dark blue, light blue, or yellow). If cold, a **sweater or fleece** may be worn BUT it must be *navy blue and PLAIN* (no words or pictures). Also, **no jewelry may be worn** as is stated in the handbook for safety reasons.

If there is a reason that your child is out of uniform, you may write a note to send in with your child to school and your child will not receive a violation.



Without a note, uniform violations are written. After three violations, students are sent home (earrings must be smaller than a dime).

Penny For Your Thoughts

During Trimester 2 the Social Studies Committee was responsible for organizing the Graph of the Month. For March the subcommittee, in its quest for ultimate school-wide integration, decided to utilize the Red Cross Penny Drive graph as its main source. Graph questions were differentiated by grade level (K-2, 3-5, and 6-8) and tested both numerically-oriented and inference-based skills. One ultimate winner per class was selected to receive a delicious ice cream prize.

Many thanks to Mrs. Caster for allowing us to "borrow" her awesome graph display, and to the Pinnacle teachers who incorporated the weekly graph questions into their lessons! This was possible due to the many generous donations of our students and families who raised money one penny at a time for the Red Cross.

Stay tuned for Trimester 3, as the Science Committee prepares to "get its graph on!"

By Miss Connell



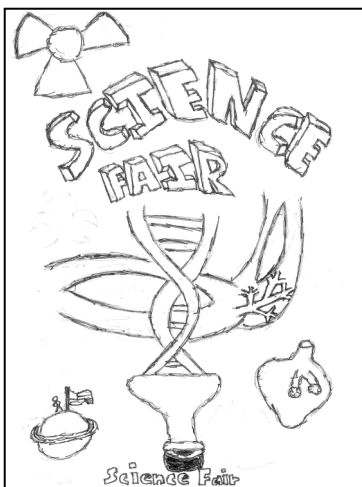
Science Fair Photos 2011

By Mrs. Koslowski



Students in grades 5-8 participated in our Annual Science Fair on March 17th. Students presented their project to two judges (a community member and a Pinnacle staff member). As part of our Charter, students are required to demonstrate their knowledge not just on tests, but also on projects. Fifth graders completed projects with classroom assistance while students in grades 6-8 completed independent projects throughout the trimester. Additional Project Sessions were provided weekly for those students and families that needed a Science expert, materials, or support.

Science classes begin learning about the Scientific Process as early as Kindergarten with regular science experiments and trials. Our school finalists will compete in the regional WNY Science Congress (held at Buffalo State College) Saturday, May 1.



Cover design by
Chauncey Walker

Pinnacle Charter School has as its mission to optimize the potential of each child to meet or exceed the New York State Learning Standards and advance to personal independence with short and long term contribution to the community.

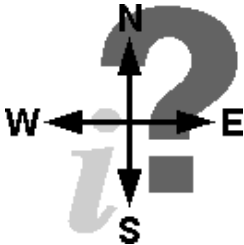
The school is unique in that it uses the Coalition of Essential School philosophy with a communication focus. The school is located in the city of Buffalo for children K through 8th grade living in the Buffalo Niagara region.

Please welcome . . .

- Mr. Smith, 7/8 Special Education Teacher (for Miss Rogers)
- Ms. Ecklund, Special Education Teacher
- Miss Coates, Redirection Room Counselor
- Miss Kain, 4th Grade Interim Substitute (for Mr. Buffomante)

A color copy of the *Communicator* can be found at our website! Visit www.pinnaclewny.org!

Pinnacle Charter School is welcoming a Dean of Students and a Redirection Room beginning in Trimester 3. To help you understand what the Dean of Students role is and what will take place in the Redirection Room, read the information below.



Q: What is a Dean of Students?

A: The Dean of Students improves student outcomes because the Dean and those who support the Dean will handle discipline and re-focus students by working with students, teachers, parents, and administrators. This allows the Chief Academic Officer, the Director of Student Services, and the Director of Instruction to focus on other issues related to teaching and learning.

Q: What is a Redirection Room?

A: The Redirection Room houses the Dean of Students and the Dean's support personnel. It also:

- Relocates students in need of disciplinary interventions away from the main office,
- Provides a location for students in in-school suspension to receive instruction,
- Allows for instruction to continue for students who have a removal from class while students await their return to class, and
- Allows the Dean of Students and the support personnel to proactively support behavior management in the halls and classrooms **before** they require removal.

Q: How is a Redirection Room different from an In-School Suspension Room?

A: An In-School Suspension (ISS) Room is a place where students receive consequences without accountability or analysis of the behavior. A Redirection Room is a place where students work with behavior specialists to (1) take ownership of and reflect on their actions, (2) develop a plan for success, and (3) receive instruction while out of the regular learning environment.

An out of school suspension is an immediate consequence for ALL students for the following reasons:

- Fighting,
- Possession of a Weapon,
- Possession of Drugs,
- Threatening to “blow up” the school, and
- Swearing at, threatening, and/or assaulting a teacher either verbally and/or physically.

Q: Pinnacle has never had anything like this before. Why now?

A: The former approach meant that the administration spent more time on discipline and less time on teaching and learning. This new approach provides increased oversight and feedback to teachers so that the students will achieve the results needed to score well on assessments. The Chief Academic Officer, Director of Student Services, and Director of Instruction will now be better able to provide support and oversight to teachers. This will fundamentally improve the way every teacher in the school provides instruction. This is just one more way Pinnacle is trying to meet the needs of all students.

Q: What happens if my child receives out-of-school suspension?

A: You will be contacted and asked to pick up your child from school. Your child will not be able to return to school until you are able to meet with a school employee to ensure that everyone involved is informed and working together to maximize the child's success at Pinnacle Charter School.

PARENTS' PAGE

Dear Parents/Guardians,

As the Interim CAO at Pinnacle Charter School I want you to know that though I may be new to this position, I am not new to Pinnacle. Your child probably knows me very well even if you may not.

However, it is important for you to get to know me too! For that reason, I would like to invite you to come in and see me. . .In fact, I would like to make myself regularly available to you to share your concerns, your thoughts, and your ideas on how to move Pinnacle from good to great! Please join me on the second and fourth Friday of every month from 8:00-8:30 in the school's Conference Room for a "Contacts and Connections" Meeting so we can work together to maximize the teaching and learning that impacts your child! During this time I will be able to listen to you as you share what you're thinking as well as share with you some of the other committed people who work with your child daily.

Sincerely,
Dr. Lyon

P.S. If you can't make it, I can always be reached at 842-1244 or hlyon@pinnaclewny.org.

Contacts and Connections Dates May 14th & 28th, June 11th & 25th, and July 9th

"When schools, families, and community groups work together to support learning, children tend to do better in school, stay in school longer, and like school more." That's the conclusion of a recent report from the Southwest Educational Development Laboratory. The report, a synthesis of research on parent involvement over the past decade, goes on to find that, regardless of family income or background, "students with involved parents are more likely to:

- Earn higher grades and test scores, and enroll in higher-level programs;
- Be promoted, pass their classes, and earn credits;
- Attend school regularly;
- Have better social skills, show improved behavior, and adapt well to school; and
- Graduate and go on to postsecondary education" (Henderson & Mapp, 2002).

(from: <http://www.edweek.org/ew/issues/parent-involvement/>)

"While we try to teach our children all about life, our children teach us what life is all about."



Please join us for an informational meeting regarding the beginning of our new P.T.T.

Parents & Teachers Together

This meeting will be informational, so that we can work together as a team with the common goal of

building a strong school community !

Choose a meeting that is convenient for you:

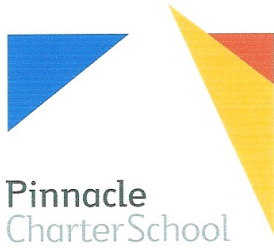
Tuesday May 10th at 7:45am OR

Wednesday May 11th at 5:45pm

WE HOPE TO SEE YOU THERE!

We are currently in the process of renewing our charter. As a parent, there are two critical roles you play in this process.

1. During this trimester we will send your child home with a short Parent Satisfaction Survey. You will be able to anonymously send in the survey with your child who will place it in a box. The data you provide will be reported to NYS's Education Department (NYSED) to keep Pinnacle open. So, your voice is important and will be heard!
2. On Wednesday, May 18th, as part of our charter renewal process, people from NYSED will visit Pinnacle. Including visiting classrooms and speaking with Board Members, teachers, students, and administrators, there will also be a group of parents who will be interviewed (at 11:00 am). If you are interested in participating, please call the main office at 842-1244 and request to be included in this interview.



Pinnacle
Charter School

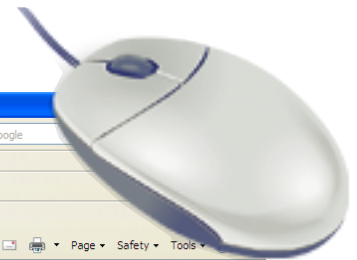
115 Ash Street
Buffalo, NY 14204

The Board of Trustees are the governing body that represent the families of Pinnacle Charter School. Board members, listed at the right, come from a variety of backgrounds including education, law, and public health.

Board of Trustees meetings are held every third Monday of the Month at Pinnacle Charter School.

Name	Position	Email
Stephen Phelps, PhD	Board Secretary	phelpssf@gmail.com
Rich Stanton	Board Chair	richard.stanton@yahoo.com
Linda Gordon	Staff Representative	lgordon@pinnaclewny.org
Kate Sarata	Assistant Board Treasurer	katesarata@gmail.com
Julie Varner	Parent Representative	jvarner@travelnurses.com
Fenice Boyd	Board Vice Chair	fboyd@buffalo.edu
Dennis Horrigan	Board Treasurer	dhorriga@chsbuffalo.org
Charles Edwards		charles.edwards@regentcomm.com
Broderick Cason		broderick.cason@univerahealthcare.com

Visit us on the web! We can be found at www.pinnaclewny.org!



Pinnacle Charter School • Reach Higher At Pinnacle! - Windows Internet Explorer

http://pinnaclewny.org/

Pinnacle Charter School • Reach Higher At Pinnacle!

Pinnacle Charter School • Reach Higher At Pinnacle! FONT A- A+ SEARCH [] GO

Reach Higher at Pinnacle Pinnacle Charter School

Home About Curriculum Enrollment Parents Community Employment Contact Us

Welcome to Pinnacle Charter School

Reach Higher at Pinnacle!

As a school with a communication focus, we plan to utilize this site in order to keep you, whether as a parent, community member, or if you are just interested in seeing what we are all about, to become better informed about the fantastic growth and achievements of our students, as well as how we are driven to better our community as a whole.

Make use of our easy search feature at the top of this page.

Find us on Facebook

Sign Up Create an account or log in to see what your friends like.

Pinnacle Charter School

Error on page.

start Pinnacle Charter Sch... Internet 100% 8:02 PM