



## Questions and Answers

### **What is the name and focus of the proposed charter school?**

Pinnacle Charter School will focus on communication specifically reading, writing and speaking skills in order to increase students' ability to express themselves.

### **Why do you want to start this charter school?**

We believe that the ability to communicate is a core competence that crosses many disciplines and leads to greater self-esteem. This, in turn, addresses the root cause of unemployment, poverty and crime.

### **What will Pinnacle Charter School offer?**

Pinnacle Charter School will offer a foreign language exploration program, speech and communication programs, special education services, and extended physical education and intramurals.

### **What makes the Pinnacle Charter School unique?**

The Pinnacle Charter School will be different in many ways:

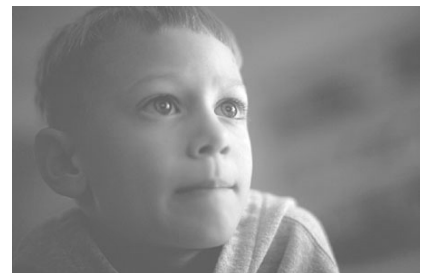
- foreign language instruction will begin in kindergarten and will be taught through fun, drama, music and performance.
- an exemplary curriculum will focus on communication while exceeding state learning standards.
- the school calendar will feature a year-round, extended-day schedule.
- students and teacher will be together for two-year periods.
- there will be an emphasis on parent and family development.
- community partners will be established.

### **What grades will it serve?**

The Pinnacle Charter School will serve kindergarten through third grade initially and eventually serve grades K through 8. The student-teacher ratio will be 20 to 1.

### **How will students benefit?**

Not only will students become competent in communication skills, but they also will be more than three years beyond their counterparts because of the year-round, extended-day schedule.



**What are the objectives of the Pinnacle Charter School?**

The Pinnacle Charter School will focus on closing the gap in student performance by focusing on four objectives:

- providing every child the assistance and time needed to succeed by extending the school calendar and engaging them for longer periods of time.
- maintaining community partners that provide learning opportunities and establish supportive relationships.
- using multiple measures to ensure that students are meeting, then exceeding, the state learning standards.
- recruiting, developing and supporting strong teachers and leaders.

**Where will the school be located?**

Within the City of Buffalo, at 115 Ash Street, on the corner of Genesee Street and two blocks east of Elm Street.

**Who is involved in applying for the charter?**

A grassroots group of educators, business people, and human service professionals.

**Now that the charter is approved, what is the next step?**

Our next steps include completing arrangements for a location and begin renovation. Our goal is to start recruitment, as well as enrollment, in February 2003 with an opening date of September 2003.

**What is your reaction to some state legislators who were proposing a moratorium on opening new charter schools?**

Although still in their infant stages, charter schools are showing signs of academic progress among their students that is dramatic at times. Not every application for a charter school is approved. The ones that are approved are unique and are an asset to students, their school districts and their communities. We are grateful that such an opportunity exists in New York State.

**What do you have to say to those who feel charter schools are undermining the fiscal stability of school districts?**

It is in the best interest of the students and community for charter schools and the school districts in which they are located to have a strong, collaborative relationship. While it is true that students in charter schools are supported by funds that would otherwise go to the school district, the number of students served by charter schools compared to those in the public sector is very low. In addition, the expenses of the school district will be reduced with any reduction in the student population.

